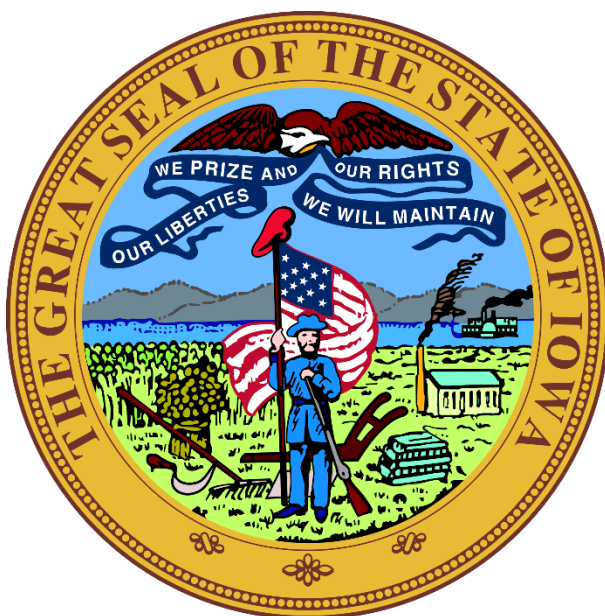




Iowa Board of Parole
Annual Report Fiscal Year 2021



Andrew Boettger, Chair
Meredith Lamberti, Vice Chair

Board Members
Thomas V. Darden
Ralph Haskins
Susie Weinacht

Alternate Board Members
Vince Lewis
Kim Reem
Renee Schulte

Contents

Highlights	3
Agency Overview	4
Iowa Board of Parole Organizational Table.....	5
Board of Parole Members – Biographies.....	6
Strategic Plan	9
Parole Risk Assessment Tools.....	10
Iowa Corrections Offender Network (ICON).....	10
Google Hangouts	10
Board Workload Performance.....	11
Graphs of Board’s Workload.....	13
Total number of parolees in FY21	13
Parole Revocations	16
Victim Services.....	17
Appendix A: Percentage of Time Served	18

Highlights

- The Board of Parole completed 11,251 deliberations in FY21. The deliberations resulted in 2,645 paroles; 820 work releases, and the imposition of 511 special sentences pursuant to Iowa Code Chapter 903B.
- The Board continued to prioritize its work to ensure registered victims have the opportunity to provide input into the deliberative process and are notified of decisions made by the Board. In addition, the Board continues to have a toll-free victim telephone number to facilitate communication (800) 448-4611.
- Parole Board Administrative Law Judges issued 3,104 decisions in FY21.
- A training manual for staff and board members was created by Parole Liaison Officer Patricia Jay. This document provides detailed and helpful information that supports the Board's mission by assuring that staff and Board members are trained to perform their duties.
- Under the leadership of then Chair Helen Miller, policy manuals were developed for staff and Board members for the first time. These documents assure that the Board and staff know and understand their responsibilities.

Agency Overview

The Board of Parole was established in 1907 by the 37th Iowa General Assembly. The Board is composed of one full-time chairperson, one full-time vice-chairperson, and three per diem members who are appointed by the Governor and confirmed by the Senate for staggered four-year terms. Board membership must include one layperson, one attorney licensed to practice law in Iowa with knowledge in correctional procedures and issues, and an individual who holds a master's degree in social work or counseling and guidance and who is knowledgeable about correctional procedures and issues. In addition, the Board must be as gender and political party balanced as possible. The Board reports directly to the Governor, and the chairperson serves at the pleasure of the Governor. The Board has its own support staff¹, but also receives administrative support from the Iowa Department of Corrections (IDOC).

The mission of the Board is to enhance overall public safety by making evidence-based and informed parole decisions for the successful re-entry of offenders back into the community to become productive and responsible citizens. To achieve this mission, the Board:

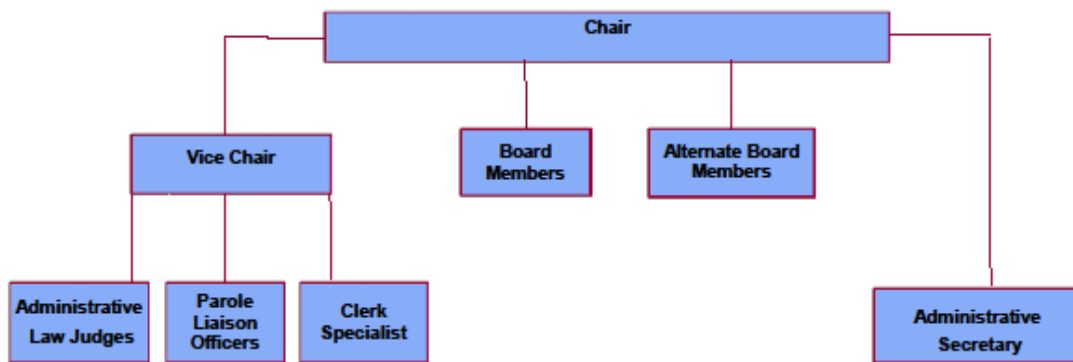
- Reviews and interviews offenders for parole and work release consideration in accordance with applicable administrative rules and via a deliberative system that respects the interest of the public, victims, and offenders, while being mindful of the finite resources available.
- Gathers and reviews information regarding new parole and work release programs being instituted or considered nationwide to determine which programs may be appropriate for use in Iowa.
- Utilizes evidence-based practices to perform risk assessments and promote supervised release at the appropriate time and level.
- Works to enhance a collaborative working relationship with all stakeholders in the criminal justice system by providing technical assistance, information and counseling on matters related to the Board of Parole's purpose.
- Reviews and makes recommendations to the Governor regarding applications for reprieves, pardons, commutation of sentences, and special restoration of citizenship rights pursuant to Iowa Code Chapter 914.

¹ See Table of Organization

Iowa Board of Parole Organizational Table



November 2021



IOWA BOARD OF PAROLE ORGANIZATIONAL CHART



Board of Parole Members – Biographies

Andrew Boettger, Chair

Andrew Boettger was appointed Chair of the Board of Parole in July 2021 having formerly been the Vice Chair since February 2020. Of counsel at the law firm of Hastings, Gartin, & Boettger, LLP, in Ames, Mr. Boettger has engaged in the private practice of law since 2005. Mr. Boettger has practiced in criminal defense, appeals, mediations, family law, and the prosecution of attorneys accused of violating rules of professional conduct, among other areas of the law that have prepared him for this role. A native of Harlan, Mr. Boettger is a proud graduate of the University of Northern Iowa and Regent University School of Law, a proud Iowan, and a proud father. He is humbled by the opportunity to serve Iowans in this role.

Meredith Lamberti, Vice Chair

Meredith Lamberti was appointed by Governor Kim Reynolds as Vice Chair of the Board of Parole in November 2021. She grew up in Ankeny and later attended Drake University for both her undergraduate degree and law school, with a short stopover in between to teach English to middle school students in Shijiazhuang, China. After graduating from law school, Meredith was a law clerk to Iowa Supreme Court Justice Bruce Zager for two years. She then went on to work as an Assistant Attorney General where she represented the Department of Human Services in child and dependent adult abuse appeals, in addition to termination of parental rights appeals. Meredith also serves on the board at On With Life in her hometown and is an advisor to college members of her sorority, Kappa Alpha Theta. She is honored to continue her career of public service in this role.

Thomas (Thom) V. Darden, Board Member

Appointed to the Board of Parole by Governor Kim Reynolds in 2021, Thom Darden holds a B.S. in Education from the University of Michigan and also took accounting, statistics and marketing courses from Cleveland State University. Mr. Darden has an extensive background in business financing, business development and is currently President of The Darden Group, Inc. in Cedar Rapids. Thom also worked for a sports management company which managed the careers of professional athletes. Thom, himself, was in the NFL. He was a defensive back with the Cleveland Browns for many years and earned All Pro status two years in a row. He holds several franchise records to this day. Mr. Darden resides in Cedar Rapids with his wife.

Ralph Haskins, Board Member

Appointed by Governor Kim Reynolds as a member of the Iowa Board of Parole in 2019. Mr. Haskins holds a Bachelor's Degree from Michigan State University and numerous professional certifications. He and his wife have called Iowa their home since 1982 when he received a corporate transfer to the state. He attributes their relocation as a true gift bringing them to their cherished State of Iowa where they raised their four children and he successfully launched his career and founded a successful residential design-build construction firm and a construction material supply company. Mr. Haskins has been involved in numerous volunteer and philanthropic activities including chairing an international faith-based mission organization and is a past president of the Des Moines Area Home Builders Association. He attends Lutheran Church of Hope in West Des Moines and has been active in projects there including oversight of building the Knapp House of Hope in partnership with MainStream Living. In addition, he has employed and mentored numerous incarcerated individuals and believes in second chances. He is also an active citizen engaging in various policy matters and takes pleasure in serving Governor Reynolds in the capacity as the Board of Parole layperson appointee.

Sue "Susie" Weinacht, Board Member

Appointed as an Alternate Member of the Board of Parole in 2017; then Board Member in 2019. Recognized by her community as a leader who makes a difference in the lives of many for the betterment of humanity; Susie is a recipient of the State of Iowa 2020 Reverend Dr. Martin Luther King, Jr. Achievement Award for her demonstrated commitment to the vision of Dr. King by promoting the racial equality of all people in Iowa through service, diversity, cultural awareness, and active community participation. Among other recent recognitions is the Cedar Rapids Gazette Everyday Hero recognition, Woman of Achievement in Service to the Community, by Waypoint Services, and the Community Biggie Award, presented by Iowa BIG. Her educational background includes earning an Executive Leadership Certificate Harvard University, John F. Kennedy School of Government, and a BSc in Education & Teaching Certificate from Eastern Illinois University. As an elected government official (At-Large City Council Member and appointment as Mayor Pro Tem) Susie strived to learn as much as possible to provide citizens the representation entrusted to her and earned status as a Certified Elected Official through the Iowa League of Cities, and Bronze Certification from National League of Cities University. Other involvement and leadership certifications: Leadership Iowa (Assoc. of Business & Industry), The Pacific Institute - Cultural Transformation, Disney Institute Keys of Excellence, and the Chamber of Commerce. She has authored several guest columns including: •"You're Welcome to Join Us" September 2018, the Cedar Rapids Gazette. Our history, our culture, and our future are tied to being inclusive and welcoming. •"False-label law can help stop deadly drugs" May 2015, the Des Moines Register. Tackling synthetic drugs from a consumer fraud & protection approach. •"Community Investment Now Recreation Destination" September 2018, the Cedar Rapids Gazette. Mt Trashmore: From quarry, to landfill, and now a recreation destination of 70+ acres of walking & biking trails. Susie currently serves as a member, by judicial appointment, of the Sixth Judicial District | Iowa Department of Corrections Board.

Vince Lewis, Alternate Board Member

Appointed to the Board of Parole as an alternate in January 2020, Vincent Lewis grew up in Des Moines, was drafted as a young adult and served in Vietnam returning to Des Moines more determined to attend college and get a degree in a helping vocation. All of his degrees are from Drake University. He graduated with a teaching degree, started teaching in the Des Moines Public Schools and over the next few years completed an MSE, a SPEC and finally a doctoral degree in administration and counseling. He retired as principal of Des Moines North High School. He also served as a special education teacher working with emotionally and behaviorally disordered students, middle school principal and alternative high school principal for 39 years; 22 of those years as an administrator. He has taught graduate classes at Upper Iowa University, Graceland University, Drake University and Des Moines Area 11 Educational Agency. While he teaches parenting classes throughout the Des Moines Metro area and other locations as requested, he has recently worked as Director of Gender Specific Programs at Children and Family Urban Ministries in inner city Des Moines. He has received numerous awards and recognitions for his years of service on many community improvement and youth advocacy boards. Vince has done workshops, speaking engagements and consulting regarding parenting without punishing, classroom behavior management, diversity and human relations awareness that is non-confrontational about preconceptions, stereotypes and misperceptions about those who are different from us to groups from church to school to corporate groups. During his free time he enjoys creating and building functional wood projects. He calls it his "Therapy by Saw Dust". Some of his projects may be viewed at one of the local art shows. He has a wife of 42 years, who is a well-established local artist, four children and six grandchildren, all of which are the joy and blessing of his life.

Kim Reem, Alternate Board Member

Appointed as an alternate member in May 2021, Ms. Reem brings nearly a decade of experience providing emergency relief, restoration and development opportunities to those seeking poverty alleviation and/or second chance reintegration into the community. In addition, she is the owner of a small business, Reem Consulting. She received her education at Kirkwood Community College in Cedar Rapids, and Maranatha Baptist University in Watertown, Wisconsin. Kim has vast and deep experiences as a community leader. She has led multiple organizations while achieving outstanding results. With her guidance, non-profits have grown in membership, reached financial sustainability, received accolades, and won awards. An alumna of Leadership Iowa, she currently serves as a member of the Iowa Advisory Board for the U.S. Global Leadership Coalition, the Linn County Compensation Board, and the Ready to Run Advisory Board at the Carrie Chapman Catt Center at Iowa State University.

Renee Schulte, Alternate Board Member

Appointed to the Board of Parole as an alternate in September 2021, Renee has worked in many levels of care including psychiatric hospital, child welfare, and therapeutic foster care as a licensed mental health counselor. Prior to her election to public office, Renee served on the National Violence Against Women task force in the Bush administration. As a legislator, she spearheaded the passage of mental health redesign in Iowa creating a regional system from an original 99 county system. She began Schulte Consulting, LLC in 2012. As a consultant, she has worked with multiple states creating strategic plans, legislation and regulations. She has also used her expertise and unique background in government relations and consulting for both non-profit and for-profit providers of healthcare services. Renee has taught at multiple colleges and universities in the psychology department, encouraging the next generation to join in this important work. She and her husband, Brent reside in Urbandale, Iowa.

Strategic Plan

Iowa Board of Parole undertook a strategic planning exercise to identify areas of focus for future development of the Board and its members. It is continuously reviewed based on additional insight and information gathered. The following are ongoing parts of the aforementioned plan:

Training and Professional Development:

- Utilize the collective wisdom and resources of the Association of Paroling Authorities International (APAI), including participation in the annual training conference and other nationally recognized paroling/corrections associations.
- Participate in facility and field location visits to gain better understand operations and facilitate open and active communication across agency boundaries.
- Review intervention programs utilized in Iowa and similar states and explore if those programs would be beneficial to our offender population.
- Utilize a current compilation of intervention programs that include their primary area of focus.
- Continue the practice, when feasible, of including an educational component in each business meeting to learn about and remain up to date on current practices, research, data, and legislation that affects paroling activities.

Analysis and Data Sophistication in Conjunction with Department of Corrections:

- Research and evaluate recidivism rates and identify patterns.
- Research and evaluate revocation activity to identify patterns.
- Evaluate and continue to develop evidence-based policies and practices.

Stakeholder and Public Outreach:

- Enhance and maintain the Board's website for purposes of providing accessibility to information pertaining to Board operations, meetings, and schedules.
- Enhance partnership with Department of Corrections policy makers.
- Enhance partnership with the Community Based Corrections system.
- Enhance the notification system for registered victims.
- Assist the Governor, when requested, to collect and make recommendations for clemency and commutation of offender sentences.

Population Review Program in Conjunction with Department of Corrections:

- Develop and enhance the Board's methods for identifying cases and target populations to review via periodic internal reviews of the prison population.
- Review candidates at the appropriate time for release consideration.
- Research and evaluate alternatives to traditional revocation.

Parole Risk Assessment Tools

The Board adopted the Iowa Violence and Victimization Instrument (IVVI) as its primary static risk assessment tool for non-sex offenders. The Iowa Board of Parole routinely works with the Iowa Department of Corrections, to review and evaluate the assessment tool. The assessment's main use is to aid the Board in measuring the potential for reoffending.

The Board continued to utilize the Iowa Sex Offender Risk Assessment (ISORA) and the Static-99 for sex offender specific risk calculation.

The IDOC has developed a new dynamic risk assessment tool called the Dynamic Risk Assessment for Offender Reentry – Institution (DRAOR – Institution) for use in case planning. Early data suggests this tool can also be utilized at the release decision-making stage by the Board. This must be confirmed via a validation process before it can be adopted for use by the Board.

Iowa Corrections Offender Network (ICON)

The Iowa Corrections Offender Network (ICON) is the main database shared by Department of Corrections and the Board of Parole. This module made it possible for the Board and the Iowa Department of Corrections to share information on a real-time basis and has increased Board workflow and efficiency.

The Board of Parole continually works with the Department of Corrections regarding revisions of this format, if needed as well as additional programming to enhance the Board's operations.

Google Hangouts

In FY21, the Board conducted 525 remote interviews over the Google Hangout system and conducted 10,726 reviews via Google Hangouts. This allowed for Board members to participate remotely, provided victims from around the state to interact with the Board without necessarily travel to Des Moines in order to participate in a parole hearing, as well as, maintaining the Board's statutory mandate regarding public hearings. Utilization of Google Hangouts has continued to result in increased efficiency and the redirection of limited resources.

Workload and Decision Statistics Summary

Workload & Performance Summary: The Board meets approximately 12 days per month for panel screenings. Panels consist of three Board members, one of which is typically the Chair or Vice-Chair. During these panel days the Board conducts case screenings, interviews, appeal reviews, and special reviews. The incorporation of ICON into the daily screening process has helped the Board to complete a large workload in an efficient and timely manner. The Board has had an increase of the number of deliberations, the number of release decisions issued, and the number of parole revocation hearings. With the automation of our operations, added time is required for each hearing in order to review each case in its entirety. A complete breakdown of the Board's workload for FY21 can be found below.

WORKLOAD & PERFORMANCE SUMMARY

	FY2019	FY2020	FY2021
DELIBERATIONS			
Case Reviews	12,921	13,992	10,726
Interviews	464	510	525
TOTAL DELIBERATIONS	13,385	14,502	11,251
RELEASE DECISIONS			
Paroles Granted	4,527	4,724	2,645
Work Release Granted	1,986	1,462	820
Special Sentence Granted ²	515	545	511
Denial of Release	4,670	5,453	4,889
TOTAL RELEASE DECISIONS	11,698	12,184	8,865
PAROLE REVOCATIONS			
PAROLE REVOCATION HEARINGS	3,474	3,474	3,104
Parole Revoked to Prison ³	928	928	538
Automatic Revocations	389	389	322
Parole Revoked to Work Release	554	554	520
Paroles Revoked ⁴	1,590	1,590	1,599
TOTAL PAROLES REVOKED	1,979	1,979	2,657
SPECIAL REVIEW DECISIONS			
Amend Decision	394	488	413
Paroles Rescinded	191	166	122
Work Release Rescinded	166	200	79
Special Sentence Rescinded	23	23	9
Deny Special Review	41	25	19
TOTAL SPECIAL REVIEW DECISIONS	815	902	642

² Commencement of a Special Sentence is non-discretionary. Iowa Code Chapter 903B mandates the special parole supervision sentence begin at the discharge of a qualifying sex offense.

³ Does not include Automatic Revocations

⁴ Includes revoking parole to work release, and revoke and discharge parole but does not include automatic revocations

BOARD APPEAL DECISIONS			
Appeal with Modification	25	29	29
Appeal Denied	567	1,104	1,104
TOTAL APPEAL DECISIONS	592	1,133	1,133
EXECUTIVE CLEMENCY			
COMMUTATION OF SENTENCE ⁵	13	24	58
Commutations Recommended	0	0	1
PARDON ⁶	7	58	85
SPECIAL RESTORATION OF CITIZENSHIP RIGHTS ⁷	12	12	72
OTHER BOARD WORK			
Registered Victims at Year end	6,337	6,573	6,648
Victim Notices: Decision Letters	3,633	3,820	3,250
Victim Notices: Interview Letters	722	781	636
Victim Registration Letters	2,318	1,620	1,170

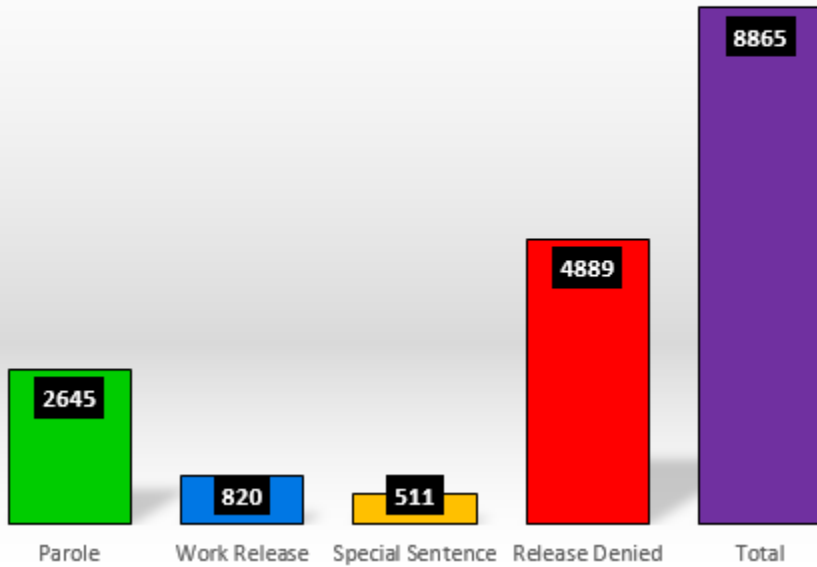
⁵ Number of commutation applications that were referred to the Office of the Governor following an investigation by the Board of Parole.

⁶ Number of pardon applications that were referred to the Office of the Governor following review by Iowa Division of Criminal Investigations.

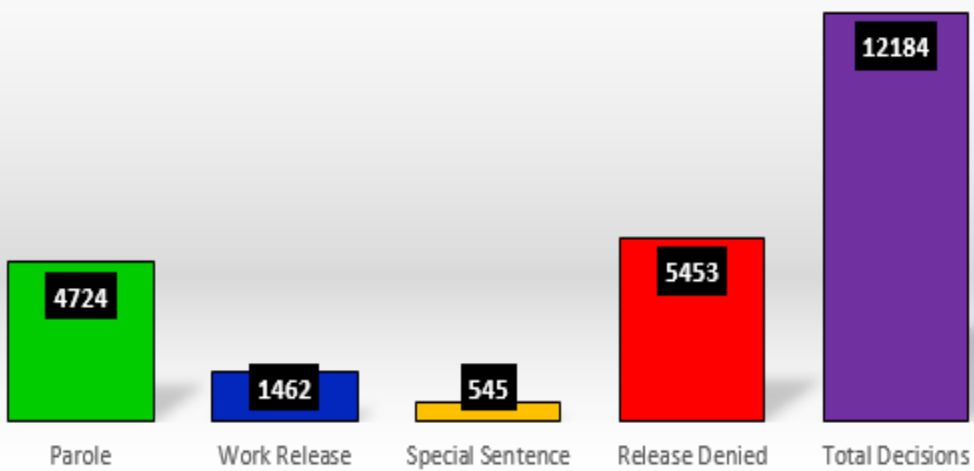
⁷ Number of special restoration of citizenship rights applications that were referred to the Office of the Governor following review by Iowa Division of Criminal Investigations.

Graphs of Board's Workload

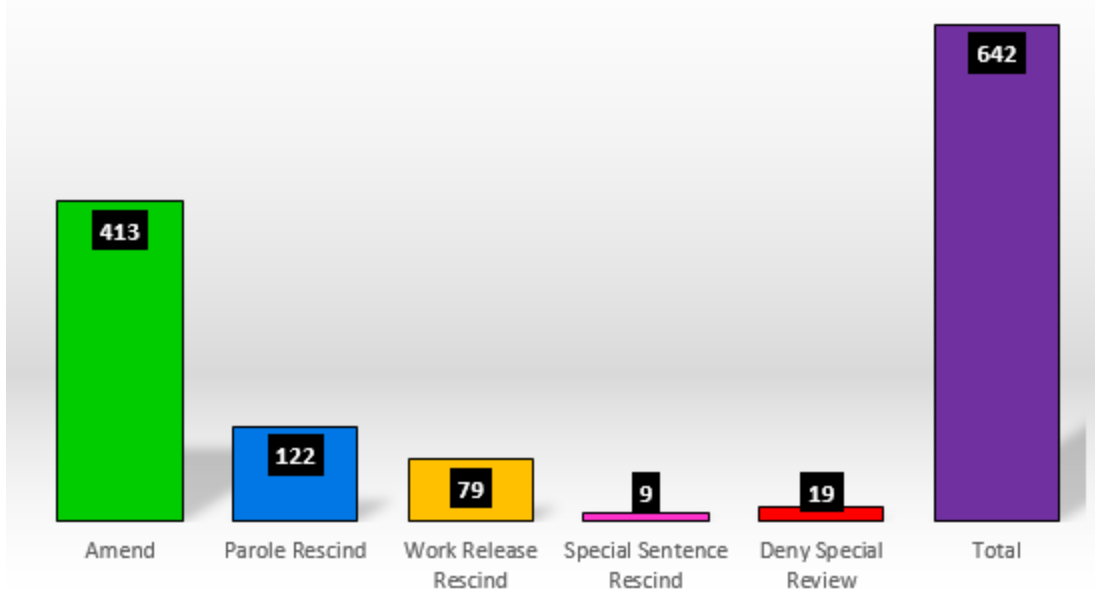
Decision Totals FY 2021



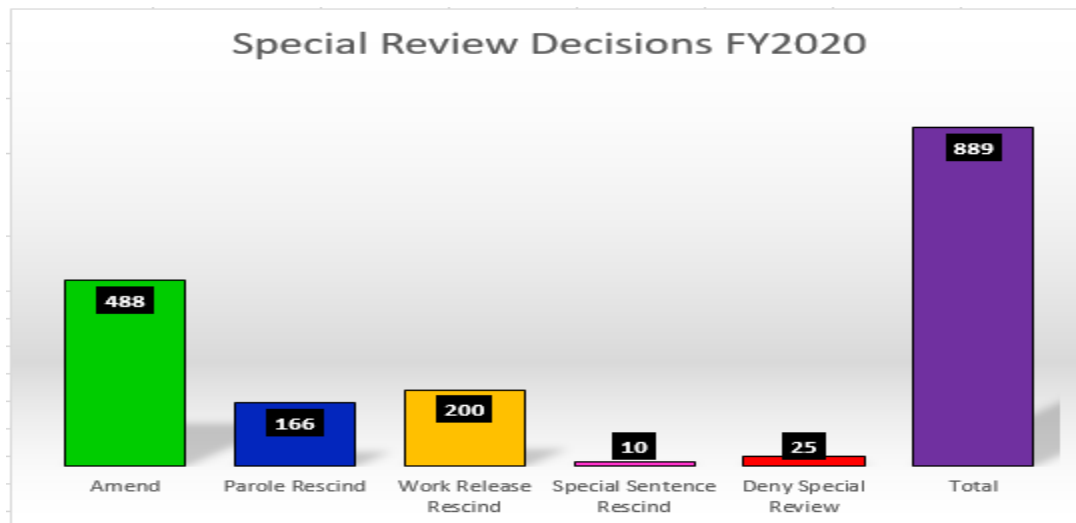
Total Decisions for FY2020



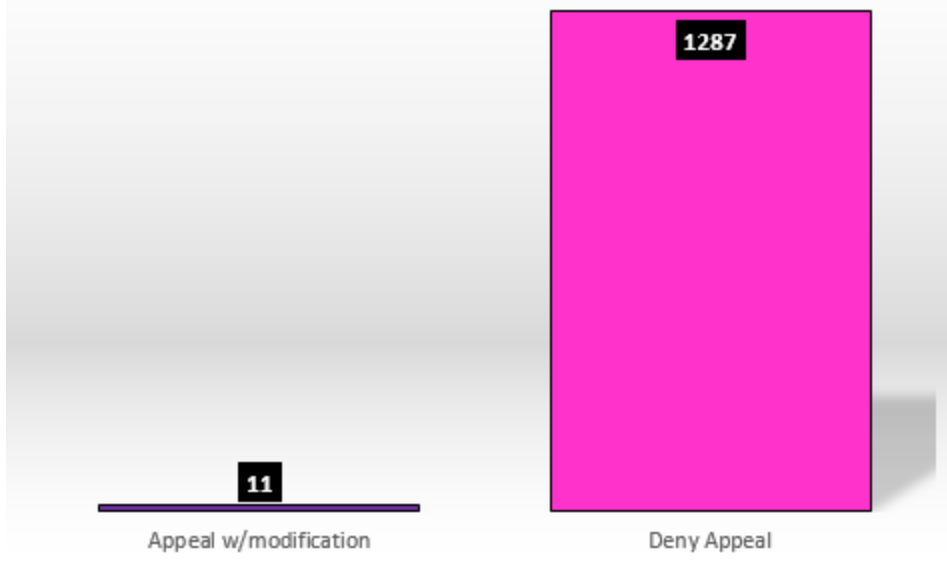
Special Review Decisions FY2021



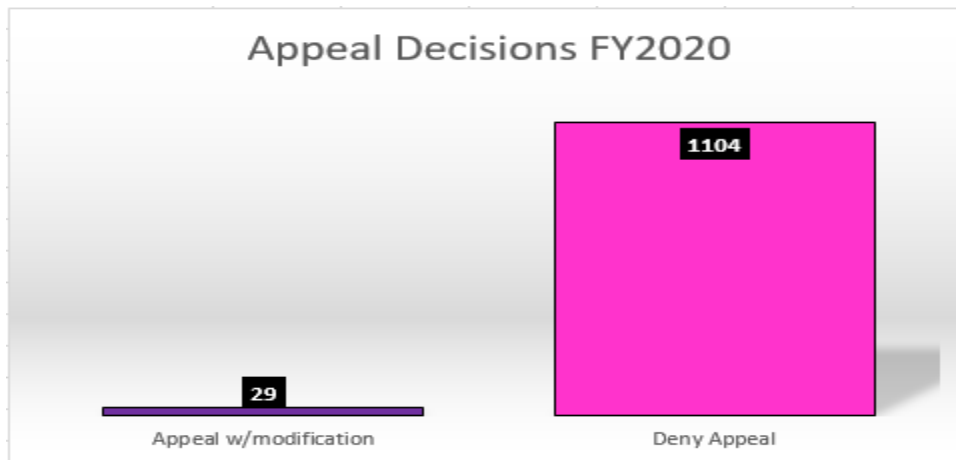
Special Review Decisions FY2020



Appeal Decision Totals FY 2021



Appeal Decisions FY2020



Parole Revocations

The parole revocation process begins with the receipt of a parole officer's violation report. The alleged violator is subsequently notified to appear before an Administrative Law Judge (ALJ) for a Parole Revocation Hearing. The ALJ determines whether or not the parolee is in violation of the terms of the parole agreement. If the ALJ finds that a parole violation has occurred, one of the following sanctions may be imposed:

- Reinstatement of parole
- Reinstatement of parole with additional conditions imposed (for example, but not limited to, substance abuse evaluation, GPS monitoring, intensive parole supervision, referral to an appropriate treatment program)
- Revocation of parole to a work release program
- Revocation of parole and return to prison

Pursuant to Iowa Code Sections 908.10 and 908.10A, Board ALJs do not hear cases involving parolees sentenced to prison for new felonies or aggravated misdemeanors. In these instances, the parole is deemed revoked as of the date of the commission of the new offense. Although no hearing is conducted for an automatic revocation, an ALJ is required to process the revocation order and notify the parolee of the revocation.

Parole Revocation Statistics

A total of 2,441 paroles were revoked in FY21. This number includes sex offenders who are subject to special sentence supervision pursuant to Iowa Code Chapter 903B.

PAROLE REVOCATION HEARINGS	3,104
Parole Revoked to Prison⁸	538
Automatic Revocations	322
Parole Revoked to Work Release	520
Paroles Revoked⁹	1,058
TOTAL PAROLES REVOKED	2,441

⁸ Does not include Automatic Revocations

⁹ Includes revoking parole to work release, and revoke and discharge parole.

Victim Services

The Board recognizes the special place that victims occupy as unwilling participants in our criminal justice system. Victims can provide crucial insight into the crimes committed against them by individuals that the Board considers for discretionary release.

The Board established its first program for victim participation in 1986. As part of this program the position of Victim Coordinator was added to the Board's staff. Today, the Victim Coordinator's primary responsibility is to assist victims who want to exercise the following rights established by the Iowa Victim Rights Act, Iowa Code Chapter 915:

- Notify victims of violent crimes, not less than twenty days prior to the Board conducting a hearing at which the offender will be interviewed, and inform the victim that they may submit their opinion concerning the release of the offender in writing prior to the hearing or may appear personally or by counsel at the hearing to express an opinion concerning the offender's release.
- Notify the victim, whether or not the victim appears at the hearing or expresses an opinion, of the Board's decision regarding release of the offender.

The Board continues to register victims of violent offenses. The ICON victim module, merging DOC and BOP victim records, was completed in FY16 and has helped make this process much more accurate and efficient.

At the end of FY21 a total of 6,648 victims were registered with the Board of Parole. The Board mailed a total of 4,393 victim notifications during FY21.

Appendix A – Percentage of Time Served Report

FY21 Prison Closures by Most Serious Convicting Crime and Length of Stay	Count of Offenders	Average of Month	Min of Month	Max of Month
A Felony	1	196.1	196.1	196.1
KIDNAPPING 1ST DEGREE	1	196.1	196.1	196.1
710.2	1	196.1	196.1	196.1
Aggravated Misdemeanor	443	11.2	0.3	49.0
ACCESSORY TO FELONY	1	5.3	5.3	5.3
703.3,A	1	5.3	5.3	5.3
Aggravated Theft	2	3.4	1.2	5.6
714.3A(2)(a)	1	5.6	5.6	5.6
711.3B	1	1.2	1.2	1.2
ANIMAL TORTURE	1	9.0	9.0	9.0
717B.3A(3A)	1	9.0	9.0	9.0
ARSON 3RD DEGREE	1	0.3	0.3	0.3
712.4	1	0.3	0.3	0.3
ASSAULT CAUSING INJURY--PEACE OFFICERS/OTHERS	7	14.0	9.6	23.6
708.3A(3)	7	14.0	9.6	23.6
ASSAULT INTENT OF INJURY	7	6.8	4.4	9.4
708.2(1)	7	6.8	4.4	9.4
ASSAULT WHILE DISPLAYING A DANGEROUS WEAPON	10	10.0	4.7	15.6
708.2(3)	10	10.0	4.7	15.6
Asslt. to Commit Sex Abuse/No Inj.-10 Yr. Special Sentence	18	12.5	0.8	33.6
709.11(3)	18	12.5	0.8	33.6
ATTEMPTED BURGLARY 3RD DEGREE	11	7.5	3.4	12.2
713.6B	11	7.5	3.4	12.2
Burglary 3rd Degree - Motor Vehicle	11	11.0	0.7	22.0
713.6A(2)	11	11.0	0.7	22.0
CARRYING WEAPONS	8	9.6	0.4	18.4
724.4	8	9.6	0.4	18.4
Child Endangerment/No Injury	10	7.6	1.2	17.8
726.6(7)	10	7.6	1.2	17.8
CONSUMPTION/INTOXICATION 3RD OR SUB.	1	10.7	10.7	10.7

123.46-B	1	10.7	10.7	10.7
CRIMINAL MISCHIEF 3RD DEGREE	8	8.2	2.4	22.4
716.5	8	8.2	2.4	22.4
DOMESTIC ABUSE (SUBSEQUENT OFFENSES)	1	8.1	8.1	8.1
708.2A(3B)	1	8.1	8.1	8.1
DOMESTIC ABUSE ASSAULT - 2ND OFFENSE	38	10.0	2.0	33.8
708.2A(3B)	38	10.0	2.0	33.8
Domestic Abuse Assault Impeding Flow of Air/Blood	23	9.7	0.5	21.5
708.2A(2)(d)	23	9.7	0.5	21.5
DOMESTIC ABUSE ASSAULT WITH INTENT OR DISPLAYS A WEAPON	5	9.4	7.1	12.4
708.2A(2C)	5	9.4	7.1	12.4
DRIVING WHILE BARRED - MOTOR VEHICLE	2	8.5	8.5	8.5
321.561	2	8.5	8.5	8.5
Driving While Barred-Habitual Offender	9	8.1	1.7	13.9
321.561	9	8.1	1.7	13.9
ELUDING	5	7.7	1.5	18.2
321.279(2)	5	7.7	1.5	18.2
HARASSMENT / 1ST DEG.	22	12.4	2.8	27.1
708.7(2)	22	12.4	2.8	27.1
HARBORING A RUNAWAY	3	8.7	6.4	10.5
710.8	3	8.7	6.4	10.5
Indecent Contact W/Child-10 Yr Special Sentence	4	20.6	9.7	33.3
709.12	4	20.6	9.7	33.3
INTERFERENCE W/ OFFICIAL ACTS SER. INJ.	1	46.8	46.8	46.8
719.1(1)	1	46.8	46.8	46.8
OPER VEH WH INT (OWI) / AGR MISD / 2ND OFF -	7	9.2	5.7	20.7
321J.2(B)	7	9.2	5.7	20.7
OPERATE VEHICLE NO CONSENT	31	9.0	1.1	20.7
714.7	31	9.0	1.1	20.7
Possession of a Controlled Substance - 2nd Offense	20	8.5	2.7	17.4
124.401(5),B	12	7.4	2.7	13.2
124.401(5)b	8	10.0	6.0	17.4
Possession of a Controlled Substance - Marijuana 3rd or subseq.	4	9.6	7.6	13.3
124.401(5),C	4	9.6	7.6	13.3

Robbery-3rd	3	18.6	6.5	27.4
711.3A(4)(1)	3	18.6	6.5	27.4
Sex Offender - Provide False Info - 1st Offense	1	17.9	17.9	17.9
692A.112	1	17.9	17.9	17.9
Sex Offender - Registration Violation - 1st Offense	22	12.6	1.1	23.2
692A.104-A	11	13.9	4.8	23.1
692A.111-A	11	11.3	1.1	23.2
Sexual Exploit. of Minor - 10 Yr. Special Sentence	6	20.3	11.5	37.2
728.12(3)	6	20.3	11.5	37.2
SPECIAL SENTENCE REVOCATION - 1ST OFFENSE	49	18.1	6.7	24.0
908.5(2)A	49	18.1	6.7	24.0
STALKING--AGGRAVATED MISDEMEANOR - 1ST OFFENSE	6	15.6	1.9	49.0
708.11(3C)	6	15.6	1.9	49.0
THEFT 3RD DEGREE	44	9.8	2.7	27.3
714.2(3)	44	9.8	2.7	27.3
UNAUTH. USE OF CREDIT CARD \$1K	5	9.3	7.1	14.6
715A.6(2)(C)	5	9.3	7.1	14.6
UNAUTHORIZED USE OF CREDIT CARDS	1	8.8	8.8	8.8
715A.6(2)	1	8.8	8.8	8.8
OPERATING WHILE UNDER THE INFLUENCE 2ND OFFENSE	11	8.5	2.6	12.5
321J.2(2)(b)	11	8.5	2.6	12.5
Invasion of Privacy-Nudity-10 Year Special Sentence	4	16.9	1.8	33.0
709.21(1)	4	16.9	1.8	33.0
Identity Theft Under \$1,000	2	10.8	7.9	13.7
715A.8(3)(c)	2	10.8	7.9	13.7
FAILURE TO REPORT CONTRABAND IN CORR. FACILITY	1	7.3	7.3	7.3
719.7(4)(C)	1	7.3	7.3	7.3
Domestic Abuse Assault w/Intent to Inflict Ser. Inj.-1st Off.	3	11.1	9.6	12.2
708.2A(2)(c)	3	11.1	9.6	12.2
ASSAULT CAUSING INJURY, VIOL OF INDIV RIGHTS	1	12.7	12.7	12.7
708.2C(3)	1	12.7	12.7	12.7
Obstructing Prosecution or Defense	2	6.5	4.7	8.2
719.3(1)	2	6.5	4.7	8.2
INDECENT CONTACT WITH A CHILD-10 Year Special Sentence	4	9.9	6.3	15.1

709.12(1)(a)	4	9.9	6.3	15.1
Attempt to Entice Away a Minor	1	4.9	4.9	4.9
710.10(4)	1	4.9	4.9	4.9
Interference w/Official Acts, Inflict Serious Injury	1	6.0	6.0	6.0
719.1(1)(e)	1	6.0	6.0	6.0
RECKLESS USE OF A FIREARM WITH PROPERTY DAMAGE	1	9.9	9.9	9.9
724.30(3)	1	9.9	9.9	9.9
TAMPERING W/WITNESS OR JUROR	2	8.8	5.9	11.6
720.4	2	8.8	5.9	11.6
GO ARMED WITH KNIFE BLADE > 8"	1	12.3	12.3	12.3
724.4(3)A	1	12.3	12.3	12.3
Possess incendiary explosive device	1	15.1	15.1	15.1
712.6(2)A	1	15.1	15.1	15.1
B Felony	121	52.7	2.0	279.5
ARSON 1ST DEGREE	1	11.6	11.6	11.6
712.2	1	11.6	11.6	11.6
ATTEMPT TO COMMIT MURDER	1	54.0	54.0	54.0
707.11	1	54.0	54.0	54.0
ATTEMPTED MURDER - 85%	3	103.3	14.3	279.5
707.11	3	103.3	14.3	279.5
BURGLARY - 1ST DEGREE WITH SEX ABUSE	1	122.8	122.8	122.8
713.3(1D)	1	122.8	122.8	122.8
BURGLARY 1ST DEGREE	13	42.0	2.0	132.4
713.3	13	42.0	2.0	132.4
CHILD ENDANGERMENT/MULTIPLE ACTS	1	94.9	94.9	94.9
726.6A	1	94.9	94.9	94.9
MURDER 2ND DEGREE	1	44.0	44.0	44.0
707.3	1	44.0	44.0	44.0
Ongoing Criminal Conduct - Criminal Network	5	35.5	9.3	87.0
706A.2(2)	5	35.5	9.3	87.0
Ongoing Criminal Conduct-Unlawful Activity	1	29.9	29.9	29.9
706A.2(4)	1	29.9	29.9	29.9
Proh Acts-Mfg, Del, Consp or Poss w/Int-Cocaine GT 5gm but LT 50 gm	3	33.1	11.5	73.5
124.401(1)(b)(3)	3	33.1	11.5	73.5

Proh Acts-Mfg, Del, Consp or Poss w/Int-Meth GT 5gm but LT 5kg	59	28.0	5.9	126.2
124.401(1)(b)(7)	59	28.0	5.9	126.2
PROH. ACTS/CONTR.,SIM SUB	3	46.8	17.1	83.0
124.401(1B)	3	46.8	17.1	83.0
ROBBERY 1ST DEGREE	1	90.5	90.5	90.5
711.2	1	90.5	90.5	90.5
ROBBERY 1ST DEGREE, 85%	1	16.6	16.6	16.6
711.2	1	16.6	16.6	16.6
SEXUAL ABUSE - 2ND DEGREE - 85%	6	214.1	8.1	260.0
709.3	6	214.1	8.1	260.0
SEXUAL ABUSE 2ND DEGREE	1	251.9	251.9	251.9
709.3	1	251.9	251.9	251.9
SEXUAL ABUSE, 2ND DEGREE, 85%	3	247.8	213.7	271.2
709.3	3	247.8	213.7	271.2
VEH. HOMICIDE/OWI 321J.2	9	58.3	27.3	77.1

707.6A(1)	9	58.3	27.3	77.1
VIOLATION OF 706A.2 - ONGOING CRIMINAL CONDUCT	6	11.8	4.1	17.9
706A.4	6	11.8	4.1	17.9
Proh Acts-Mfg, Del, Consp or Poss w/Int-Meth GT 5kg	1	62.6	62.6	62.6
124.401(1)(a)(2)(d)	1	62.6	62.6	62.6
Proh Acts-Mfg, Del, Consp or Poss w/Int-Cocaine more than 100 gm and less than 500 gms.	1	46.5	46.5	46.5
124.401(1)(b)(2)(b)	1	46.5	46.5	46.5
C Felony	601	26.5	0.6	212.1
ARSON 2ND DEGREE	12	22.1	5.8	45.2
712.3	12	22.1	5.8	45.2
ATTEMPT BURGLARY 1ST DEGREE	1	36.1	36.1	36.1
713.4	1	36.1	36.1	36.1
BURGLARY 2ND DEGREE	75	16.6	1.5	52.8
713.5	75	16.6	1.5	52.8
Child Endangerment-Serious Injury	6	59.9	11.9	118.9
726.6(5)	6	59.9	11.9	118.9
CONSPIRACY/COMMIT FORC FELONY	7	24.1	10.0	56.8
706.3,A	7	24.1	10.0	56.8

Conspiracy/Commit Forcible Felony	3	9.3	5.0	12.8
706.1,A	3	9.3	5.0	12.8
CRIMINAL MISCHIEF 1ST DEGREE	5	13.8	8.7	21.2
716.3	5	13.8	8.7	21.2
ENTICING AWAY A MINOR	1	22.9	22.9	22.9
710.10(1)	1	22.9	22.9	22.9
FRAUDULENT PRACTICE 1ST DEGREE	1	10.1	10.1	10.1
714.9	1	10.1	10.1	10.1
INTIMIDATION WITH A DANGEROUS WEAPON	9	14.1	7.2	20.9
708.6(1)	9	14.1	7.2	20.9
KIDNAPPING 3RD DEGREE	3	26.6	21.1	35.7

710.4	3	26.6	21.1	35.7
Lascivious Acts With A Child - Life Special Sentence	19	68.3	11.0	154.4
709.8(1)	19	68.3	11.0	154.4
Lascivious Acts With Child-Life Special Sentence	5	39.7	22.7	63.4
709.8(2)	5	39.7	22.7	63.4
NEGLECT OR ABANDONMENT	6	15.4	7.0	20.4
726.3	6	15.4	7.0	20.4
POSS. CONTRABAND IN CORR. FACILITY - WEAPON	1	15.1	15.1	15.1
719.7(4A)	1	15.1	15.1	15.1
Proh Acts-Mfg, Del, Consp or Poss w/Int-Cocaine LT 500gm	7	14.8	3.3	21.5
124.401(1)(c)(2)(b)	7	14.8	3.3	21.5
Proh Acts-Mfg, Del, Consp or Poss w/Int-Cocaine LT 5gm	3	12.2	8.6	19.0
124.401(1)(c)(3)	3	12.2	8.6	19.0
Proh Acts-Mfg, Del, Consp or Poss w/Int-Heroin LT 100gm	2	38.3	27.4	49.1
124.401(1)(c)(1)	2	38.3	27.4	49.1
Proh Acts-Mfg, Del, Consp or Poss w/Int-Other Cont Subst LT 500 gm	3	13.7	11.5	17.0
124.401(1)(c)(2)(d)	3	13.7	11.5	17.0
Proh Acts-Mfg, Del, Consp, or Poss w/Int-Amph LT 5 gm	3	17.6	7.0	24.3
124.401(1)(c)(7)	3	17.6	7.0	24.3
Proh Acts-Mfg, Del, Consp, or Poss w/Int-Meth LT 5 gm	180	14.2	0.6	49.5
124.401(1)(c)(6)	180	14.2	0.6	49.5
Proh Acts-Mfg, Del, Consp, or Poss w/Int-Other Subst Sched I, II, III	14	10.8	2.6	24.1
124.401(1)(c)(8)	14	10.8	2.6	24.1

Proh. Acts - Mfg, Del, Consp or Poss w/Int. - Cocaine LT 10 gm	7	9.9	1.4	19.6
124.401(1)(c)(3)	7	9.9	1.4	19.6
Prohibited Acts, Sched I, II, III Controlled Substance	2	10.1	7.6	12.5
155A.23-E	2	10.1	7.6	12.5
ROBBERY 2ND DEGREE, 85%	21	37.2	1.7	111.6
711.3	21	37.2	1.7	111.6
Sex Abuse 3rd Degree-Life Special Sentence	22	78.5	21.9	156.9
709.4	22	78.5	21.9	156.9
Sex Abuse-3rd, Spouse or Cohabitant-Life Special Sentence	5	65.3	12.1	107.6
709.4(1)	5	65.3	12.1	107.6
Sex Offender Registration Violation - 2nd offense or subsequent	1	19.9	19.9	19.9
692A.104	1	19.9	19.9	19.9
SEXUAL ABUSE 3RD DEGREE	3	161.6	62.2	212.1
709.4	3	161.6	62.2	212.1
Sexual Abuse 3rd Degree/Life Special Sentence	7	70.3	35.5	101.8
709.4(2C,4)	7	70.3	35.5	101.8
Sexual Abuse-3rd/Victim 12 or 13 Yrs Old-Life Special Sentence	4	52.0	47.5	57.8
709.4(2)(b)	4	52.0	47.5	57.8
Sexual Exploit. of Minor-Life Special Sentence	2	66.7	44.5	89.0
728.12(1)	2	66.7	44.5	89.0
THEFT 1ST DEGREE	74	17.4	2.5	135.6
714.2(1)	74	17.4	2.5	135.6
TRAFFICKING IN STOLEN WEAPON, 2ND OFF./USE	1	23.0	23.0	23.0
724.16A-B	1	23.0	23.0	23.0
UNAUTH. USE OF CREDIT CARD) \$10K	1	17.6	17.6	17.6
715A.6(2)(A)	1	17.6	17.6	17.6
USING A JUVENILE TO COMMIT AN INDICTABLE OFFENSE	1	16.3	16.3	16.3
709A.6	1	16.3	16.3	16.3
VEH. HOMICIDE/U-INF. OR RECKLESS	9	44.6	25.5	66.5
707.6A(1)	2	32.1	31.4	32.8
707.6A(2)	7	48.2	25.5	66.5
VOLUNTARY MANSLAUGHTER	5	44.6	17.0	111.9
707.4	5	44.6	17.0	111.9
WILLFUL INJURY	1	39.9	39.9	39.9

708.4	1	39.9	39.9	39.9
WILLFUL INJURY - CAUSING SERIOUS INJURY	18	35.5	2.6	171.3
708.4(1)	18	35.5	2.6	171.3
Sex Abuse 3rd-By Force, 1st Off-Life Special Sentence	9	40.9	31.7	48.8
709.4(1)(a)	9	40.9	31.7	48.8
Sex Abuse 3rd/Victim 14/15, Def 4+-Life Special Sentence	14	41.4	13.1	64.9
709.4(1)(b)(3)(d)	14	41.4	13.1	64.9
Proh Acts-Mfg, Del, Consp or Poss w/Int-Cocaine LT 40gm	1	9.1	9.1	9.1
124.401(1)(c)(3)	1	9.1	9.1	9.1
Sex Abuse 3rd-Child Victim Age 12/13-Life Special Sentence	12	41.8	22.0	52.8
709.4(1)(b)(2)	12	41.8	22.0	52.8
CHILD STEALING	1	10.1	10.1	10.1
710.5	1	10.1	10.1	10.1
POSSESSION STOLEN PROPERTY	1	21.8	21.8	21.8
714.1(4),A	1	21.8	21.8	21.8
Conspire w/Intent Deliver False Other I,II,III CS	1	15.8	15.8	15.8
124.401(1)(c)(9)	1	15.8	15.8	15.8
Sex Abuse 3rd/Victim 14/15, Family Perp-Life Special Sentence	4	52.4	45.2	62.0
709.4(1)(b)(3)(b)	4	52.4	45.2	62.0
SEXUAL ABUSE 3RD - VICTIM 12 OR 13 YRS OF AGE	1	98.8	98.8	98.8
709.4(2)(b)	1	98.8	98.8	98.8
Intimidation with Dangerous Weapon-Intent (Non-Forcible)	3	26.6	19.7	31.0
708.6	3	26.6	19.7	31.0
Proh Acts-Mfg, Del, Consp or Poss w/Int-Marij GT 50kg but LT 100kg	1	9.4	9.4	9.4
124.401(1)(c)(5)	1	9.4	9.4	9.4
Solicitation to Commit Murder	1	26.4	26.4	26.4
707.3A	1	26.4	26.4	26.4
Identity Theft Over \$10,000	1	18.0	18.0	18.0
715A.8(3)(a)	1	18.0	18.0	18.0
Sex Abuse-3rd--Vict Ment/Phys Helpless-1st Off-Life Special Sentence	1	37.1	37.1	37.1
709.4(1)(d)	1	37.1	37.1	37.1
D Felony	1036	15.1	0.3	102.2
ASSAULT - SERIOUS INJURY	8	14.9	2.8	45.0
708.2(4)	8	14.9	2.8	45.0

ASSAULT INTENT OF INJURY PEACE OFFICER/OTHERS	1	15.6	15.6	15.6
708.3A(1)	1	15.6	15.6	15.6
ASSAULT WITH WEAPON--PEACE OFFICERS/OTHERS	5	14.6	7.1	27.5
708.3A(2)	5	14.6	7.1	27.5
ASSLT WHILE PARTIC. IN FELONY	4	14.4	6.8	17.5
708.3,B	4	14.4	6.8	17.5
Asslt. to Commit Sex Abuse/Bodily Inj.-10 Yr Special Sentence	4	27.5	17.8	36.9
709.11(2)	4	27.5	17.8	36.9
ATTEMPTED BURGLARY 2ND DEGREE	3	12.4	7.0	15.7
713.6	3	12.4	7.0	15.7
BURGLARY 3RD DEGREE	144	14.2	1.3	46.7
713.6A	144	14.2	1.3	46.7
Child Endangerment Resulting in Bodily Injury	1	7.8	7.8	7.8
726.6(2A)	1	7.8	7.8	7.8
Child Endangerment-Bodily Injury	7	14.3	6.0	37.9
726.6(6)	7	14.3	6.0	37.9
CONSPIRACY/COMMIT FELONY (PROPERTY)	2	11.1	8.4	13.9
706.3,C	2	11.1	8.4	13.9
Conspiracy/Commit Non-Forcible Felony	1	5.9	5.9	5.9
706.1,B	1	5.9	5.9	5.9
CRIMINAL MISCHIEF 2ND DEGREE	22	13.5	4.3	28.0
716.4	22	13.5	4.3	28.0
DISARMING A PEACE OFFICER	1	9.0	9.0	9.0
708.13(2),B	1	9.0	9.0	9.0
DOMESTIC ABUSE ASSAULT - 3RD OR SUBSEQUENT OFFENSE	4	16.5	5.4	30.6
708.2A(4)	4	16.5	5.4	30.6
Domestic Abuse Assault Impeding Air/Blood Flow Causing Bodily Injury	20	16.6	1.3	25.2
708.2A(4A)	1	12.8	12.8	12.8
708.2A(5)	19	16.8	1.3	25.2
Dominion/Control of firearm/off weapon by domestic abuse offender	3	14.1	13.1	14.7
724.26(2)(a)	3	14.1	13.1	14.7
Dominion/Control of Firearm/Offensive Weapon by Felon	29	14.6	4.4	47.4
724.26(1)	29	14.6	4.4	47.4
ELUDING	19	12.8	2.9	33.3

321.279(3)	19	12.8	2.9	33.3
ENTICING AWAY A MINOR	4	27.5	13.4	49.5
710.10(2)	4	27.5	13.4	49.5
ESCAPE OF FELON	3	8.8	4.0	16.4
719.4(1)	3	8.8	4.0	16.4
EXTORTION	5	12.0	6.9	19.6
711.4	5	12.0	6.9	19.6
FAILURE TO AFFIX TAX STAMP	5	9.3	1.2	15.2
453B.12	5	9.3	1.2	15.2
FAILURE TO APPEAR FELONY CHG.	4	21.5	4.1	45.3
811.2(8),A	4	21.5	4.1	45.3
FORGERY	104	11.5	1.8	47.1
715A.2(2)(a)	101	11.4	1.8	47.1
715A.2(A)	3	13.1	6.2	25.0
FORGERY/IOWA LOTTERY FRAUD	1	11.1	11.1	11.1
99G.36(1)	1	11.1	11.1	11.1
FRAUDULENT PRACTICE 2ND DEGREE	2	14.2	13.6	14.8
714.10	2	14.2	13.6	14.8
FURN. CONTR. SUBST. TO INMATES	2	10.2	8.3	12.1
719.8	2	10.2	8.3	12.1
Gathering For Use of Drugs - Other than Marijuana	3	10.7	6.8	14.2
124.407,A	3	10.7	6.8	14.2
GOING ARMED WITH INTENT	11	18.3	5.9	46.1
708.8	11	18.3	5.9	46.1
IDENTITY THEFT	1	14.5	14.5	14.5
715A.8,A	1	14.5	14.5	14.5
Incest-10 Yr. Special Sentence	3	25.5	16.3	34.9
726.2	3	25.5	16.3	34.9
INTERFERENCE W/OFFICIAL ACTS, DANGEROUS WEAPON	1	17.9	17.9	17.9
719.1(1),D	1	17.9	17.9	17.9
Interference w/Official Acts-Dangerous Weapon	5	9.9	5.4	14.0
719.1(1)(e)	2	7.1	5.4	8.8
719.1(1)(f)	3	11.7	8.7	14.0
INTIMIDATION WITH A DANGEROUS WEAPON	5	17.3	5.9	30.3

708.6(2)	5	17.3	5.9	30.3
INVOL MANSL/PUBLIC OFFENSE	2	8.4	0.3	16.4
707.5(1)	2	8.4	0.3	16.4
Lascivious Acts w/Child-Inflict Pain/Discomfort - 10 yr Special Sentence	1	41.2	41.2	41.2
709.8(1)(e)	1	41.2	41.2	41.2
Lascivious Acts w/Child-Solicitation - 10 yr Special Sentence	12	27.3	16.1	58.6
709.8(1)(d)	12	27.3	16.1	58.6
Lascivious Acts With A Child - Solicitation - 10 yr. special sentence	2	77.8	53.5	102.2
709.8(3)	2	77.8	53.5	102.2
OPER VEH WH INT (OWI)/CLASS D FEL/3RD AND SUBSEQUENT OFF	38	13.5	0.8	47.3
321J.2(C)	38	13.5	0.8	47.3
Operating While Intoxicated - 3rd or Subsequent Offense	31	11.7	4.9	20.3
321J.2(2)(c)	31	11.7	4.9	20.3
PIMPING	2	15.9	15.2	16.7
725.2	2	15.9	15.2	16.7
POSSESSION OF A CONTROLLED SUBSTANCE	1	13.9	13.9	13.9
124.401(5)D	1	13.9	13.9	13.9
POSSESSION OF A CONTROLLED SUBSTANCE - 2ND OFFENSE - 1	1	10.1	10.1	10.1
124.401(5),C	1	10.1	10.1	10.1
Possession of a Controlled Substance - 3rd and subsequent	129	11.7	3.0	35.8
124.401(5)(c)	129	11.7	3.0	35.8
Possession of Contraband in Correctional Facility	4	9.8	7.4	14.3
719.7(4)(b)	4	9.8	7.4	14.3
Possession of Contraband in Correctional Institution	6	9.8	2.0	15.3
719.7(3)(a)	5	9.0	2.0	15.3
719.7(4)(b)	1	13.5	13.5	13.5
Proh Acts-Mfg, Del, Consp or Poss-Marij LT 50 kg	36	15.8	1.5	78.7
124.401(1)(d)(2)	36	15.8	1.5	78.7
Proh Acts-Poss Prod Int for Mfg Cont Subst-Anhydrous Ammonia	1	9.4	9.4	9.4
124.401(4)(d)	1	9.4	9.4	9.4
Proh Acts-Poss Prod Int for Mfg Cont Subst-Pseudoephedrine	2	9.4	6.2	12.5
124.401(4)(b)	2	9.4	6.2	12.5
Proh Acts--Possession Ammonia Sulfate	1	13.4	13.4	13.4
124.401(4)(q)	1	13.4	13.4	13.4

Proh. Acts. - Mfg., Del., Consp., or Poss.	9	9.5	2.2	18.4
124.401(1)(d)	9	9.5	2.2	18.4
REC. TRANSP, POS. FIREARM FELON	25	15.4	2.6	56.0
724.26	25	15.4	2.6	56.0
Serious Injury by Vehicle	7	17.9	6.2	44.5
707.6A(4)	7	17.9	6.2	44.5
Sex Offender - Area/Activity Violation - 2nd or subsequent	1	11.3	11.3	11.3
692A.113	1	11.3	11.3	11.3
Sex Offender - Registration Violation - 2nd or subsequent offense	14	18.2	7.0	30.2
692A.111-B	14	18.2	7.0	30.2
Sex Offender - Registration Violation 2nd or subsequent offense	10	16.2	4.5	26.1
692A.104-B	10	16.2	4.5	26.1
Sex Offender Residency Violation - 2nd or subsequent	2	5.8	2.4	9.1
692A.114	2	5.8	2.4	9.1
Sex Offender-Verification Viol-2nd or Subsequent	2	10.5	8.1	12.9
692A.108-B	2	10.5	8.1	12.9
SPECIAL SENTENCE REVOCATION - 2ND/SUB.	61	28.9	2.7	60.2
908.5(2)B	61	28.9	2.7	60.2
STALKING	1	16.0	16.0	16.0
708.11(3B)	1	16.0	16.0	16.0
STALKING 3RD OF SUBSEQUENT OFFENSE -	1	17.8	17.8	17.8
708.11(2A)	1	17.8	17.8	17.8
THEFT 2ND DEGREE	113	13.1	1.6	50.9
714.2(2)	113	13.1	1.6	50.9
THEFT OF IOWA LOTTERY TICKETS	1	4.2	4.2	4.2
99G.36	1	4.2	4.2	4.2
TRAFFICKING IN STOLEN WEAPONS	5	16.0	11.5	20.8
724.16A,1	5	16.0	11.5	20.8
UNAUTH. USE OF CREDIT CARD, GREATER THAN \$1K, LESS THAN \$10K	5	13.3	3.1	32.7
715A.6(2)(B)	5	13.3	3.1	32.7
UNAUTHORIZED POSSESSION OF OFFENSIVE WEAPONS	1	10.7	10.7	10.7
724.3	1	10.7	10.7	10.7
WILLFUL INJURY - CAUSING BODILY INJURY	35	17.5	2.6	48.0
708.4(2)	35	17.5	2.6	48.0

Domestic Abuse Assault-3rd or Subsequent Offense, 85%	10	21.2	14.7	41.6
708.2A(4)	10	21.2	14.7	41.6
Burglary 3rd Degree-Motor Vehicle-2nd or Subseq	2	13.5	12.3	14.6
713.6A(2)	2	13.5	12.3	14.6
Sex Offender - Additional Registration Violation - 2nd or subsequent offense	1	18.5	18.5	18.5
692A.105	1	18.5	18.5	18.5
POSS. CONTRABAND IN CORR. FACILITY	1	10.0	10.0	10.0
719.7(4B)	1	10.0	10.0	10.0
ASSLT. TO SEX ABUSE/INJURY	1	21.4	21.4	21.4
709.11,B	1	21.4	21.4	21.4
ASSAULT WITH A WEAPON, VIOL OF INDIV RIGHTS	1	24.7	24.7	24.7
708.2C(4)	1	24.7	24.7	24.7
Identity Theft Over \$1000 Under \$10000	5	14.1	8.2	24.8
715A.8(3)(b)	5	14.1	8.2	24.8
CHILD ENDANGERMENT/BODILY INJURY	1	16.2	16.2	16.2
726.6(5)	1	16.2	16.2	16.2
Threats-Explosive or Incendiary Device	1	18.5	18.5	18.5
712.8	1	18.5	18.5	18.5
Child Endangerment - Meth Exposure	1	15.5	15.5	15.5
726.6(6)-B	1	15.5	15.5	15.5
ILLEGAL USE OF SCANNING DEVICE	1	22.9	22.9	22.9
715A.10(1)	1	22.9	22.9	22.9
INMATE ASSAULT ON EMPLOYEE OF CORRECTIONAL FACILITY	1	27.8	27.8	27.8
708.3B	1	27.8	27.8	27.8
Possess Electronic Contraband in Correctional Facility	1	12.6	12.6	12.6
719.7A(2)(b)	1	12.6	12.6	12.6
Sexual Exploit. By Counselor/Therapist-10 Yr. Special Sentence	1	19.4	19.4	19.4
709.15(2)(a)	1	19.4	19.4	19.4
Inmate Assault w/Bodily Fluids	3	32.8	1.5	58.6
708.3B(2)	3	32.8	1.5	58.6
FALSE REPORTS	1	9.4	9.4	9.4
712.7	1	9.4	9.4	9.4
INTERFERENCE W/ OFFICIAL ACTS SER. INJ./WEAPON	1	27.8	27.8	27.8
719.1(1)-C	1	27.8	27.8	27.8

Rec., Transp., Poss. firearm - dom. viol w/protective order	2	47.7	4.5	91.0
724.26(2)(a)(c)	2	47.7	4.5	91.0
SOLICITATION TO COMMIT FELONY	1	3.7	3.7	3.7
705.1,A	1	3.7	3.7	3.7
LEAVE SCENE OF INJURY/DEATH - TRAFFIC	1	34.1	34.1	34.1
321.261(4)	1	34.1	34.1	34.1
Felony - Enhancement to Original Penalty	169	22.1	3.3	170.9
Cont Subst-2nd or Subseq-not to exceed 3X Penalty Enh	47	24.5	6.2	133.5
124.411	47	24.5	6.2	133.5
HABITUAL OFFENDER (PERSON)	17	41.6	7.2	170.9
902.8,A	17	41.6	7.2	170.9
HABITUAL OFFENDER (PROPERTY)	92	17.5	3.3	85.1
902.8,B	92	17.5	3.3	85.1
MANUFACTURE METH IN MINORS PRESENCE - PENALTY ENHANCED	1	14.1	14.1	14.1
124.401C	1	14.1	14.1	14.1
MANUFACTURING METH MINORS PRESENCE	1	28.3	28.3	28.3
124.401C	1	28.3	28.3	28.3
Proh Acts-Dist, Poss w/Int to Dist Sched I, II, III-Real Prop-penalty enhancedadd 5 yr	3	11.5	6.7	18.1
124.401A	3	11.5	6.7	18.1
Proh Acts-Firearm Poss/Control-2X Penalty Enh	7	20.3	6.6	60.8
124.401(1E)	7	20.3	6.6	60.8
Proh Acts-Poss Sched I, II, III-Real Prop (100 hr CSS)	1	44.9	44.9	44.9
124.401B	1	44.9	44.9	44.9
Felony - Mandatory Minimum	2	67.4	20.5	114.2
SEXUAL PREDATOR - COMMUNITY SUPERVISION	1	114.2	114.2	114.2
901A.2(7)	1	114.2	114.2	114.2
SEXUAL PREDATOR - COMMUNITY SUPERVISION - Up to 2 Years	1	20.5	20.5	20.5
901A.2(9)	1	20.5	20.5	20.5
Serious Misdemeanor	15	7.1	1.9	11.0
ASSAULT ON PEACE OFFICERS & OTHERS	2	8.3	8.1	8.5
708.3A(4)	2	8.3	8.1	8.5
Assault with bodily injury or mental illness	6	8.3	4.6	11.0
708.2(2)	6	8.3	4.6	11.0

DOMESTIC ABUSE ASSAULT - BODILY INJURY - MENTAL	2	7.7	5.3	10.1
708.2A(2B)	2	7.7	5.3	10.1
THEFT 4TH DEGREE	1	5.5	5.5	5.5
714.2(4)	1	5.5	5.5	5.5
OPERATING WHILE UNDER THE INFLUENCE 1ST OFFENSE	2	4.1	2.8	5.4
321J.2(2)(a)	2	4.1	2.8	5.4
Indecent Exposure-10 Yr Special Sentence	2	5.3	1.9	8.8
709.9	2	5.3	1.9	8.8
Simple Misdemeanor	1	10.4	10.4	10.4
CONTEMPT - VIOLATION OF NO CONTACT PROTECTIVE ORDER	1	10.4	10.4	10.4
664A.7(1)	1	10.4	10.4	10.4
Grand Total	2389	19.7	0.3	279.5